



## KIC Premises



**KSHITIZ**  
INTERNATIONAL  
**COLLEGE**

**Affiliated to Pokhara University**  
**BBA | BBA-BI**



Kalikanagar, Butwal-10



071-438676, 437676, 9801137675



[www.kshitizcollege.edu.np](http://www.kshitizcollege.edu.np)



[kshitiz@pu.edu.np](mailto:kshitiz@pu.edu.np)



[www.facebook.com/kicofficial](https://www.facebook.com/kicofficial)



[www.instagram.com/kshitizcollege](https://www.instagram.com/kshitizcollege)



[www.linkedin.com/in/kicofficial](https://www.linkedin.com/in/kicofficial)



**KSHITIZ**  
INTERNATIONAL  
**COLLEGE**



**Prospectus**  
**2023**

**Affiliated to Pokhara University**  
**BBA | BBA-BI**



## KSHITIZ INTERNATIONAL COLLEGE

Kshitiz International College (KIC) is an academic chain of New Horizon Institute. Established in 2009 AD, the college has been running BBA and BBA-BI programs. It is also an ally of New Horizon College, Horizon GBS School, Butwal Model College, and New Horizon EBS School. Currently, KIC has been nourishing more than 600 students by imparting both student-centric as well as career-centric teaching-learning pedagogies in and outside the classrooms. The dynamic team of energetic and experienced faculties is one of the strengths of this institution. Since the establishment, we believe, we have been executing the programs with a different approach.

KIC aspires to be the leading learning center for students seeking their careers in the field of management and its branches. Our teaching-learning modules at KIC focus on individual accountability, positive attitude, knowledge sharing, group discussion, personality development, skill building, participatory practice, presentation skills, and life skills. Most of our students join the banking industry, insurance industry, and manufacturing industry, and start up their own ventures.

## VISION & MISSION

To march relentlessly to create an excellent creative educational abode offering a conducive and sound academic environment. Its mission is to run market-friendly programs and produce globally competent professionals.

## OBJECTIVES

- Develop KIC as a center of academic excellence.
- Impart quality education to produce responsible, competent, and versatile professionals.
- Develop and pursue career-oriented and innovative co-curricular non-credit programs.



## THE BBA PROGRAM

The BBA program is basically intended for the students seeking their career in Business Administration and Professional Management with the demand of the 21st century management. The program specially aims to:

- ▶ Prepare students for career in business and public management.
- ▶ Inculcate positive attitudes, abilities and practical skills for a competent manager.

## THE BBA-BI PROGRAM

The Bachelor of Business Administration in Banking and Insurance (BBA-BI) program is designed to provide students with sound conceptual foundation and practical skills in various areas of banking, finance and insurance. Specially, the program aims to develop graduates:

- ▶ Who have a sound knowledge base and proper conceptual underpinnings of business management, banking, finance and insurance.
- ▶ Who are well acquainted with the broader contexts of business organizations in Nepal and the wider world.

## ENTRY REQUIREMENT FOR BBA AND BBA-BI PROGRAMS

- ▶ 10+2 passed with at least 'D+' Grade or Proficiency Certificate Level (PCL) or Equivalent as recognized by PU.
- ▶ Must be qualified through KIC Management Aptitude Test (KIC MAT)

## SCHOLARSHIPS & FINANCIAL SUPPORT

KIC has been providing students with varieties of scholarships on merit basis upto 100% in each semester.





## EXTRA-CURRICULAR ACTIVITIES

Extra-Curricular Activities expand your education outside the classroom. At KIC you meet the students with similar interest and get active in developing your skills inside you through diversified activities: Games & Sports, Singing & Dancing, Presentation Skill Competition, Quiz Competition, Guru Purnima Celebration, Cultural Programs, Welcome & Farewell Programs etc. The students can have opportunity to join New Horizon Cricket Academy and other such teams.

If you meet exposure to new ideas to see where your interest fits, to meet visionary thinkers and entrepreneurs of the locality, you need to join KIC where you can explore new classroom experiences and discover the possibilities within you.



## INTERNSHIP & RESEARCH OPPORTUNITIES

The internship and research opportunities are excellent for exploring and gaining practical experience. They look great in your job search. KIC supports you find a good place of your interest for your internship and provide you in different kinds of research activities.

## SOCIAL ENGAGEMENT AT KIC

Get involved, get active and join one of the KIC's student organizations. We have different organizations of our students in KIC for developing your leadership skills giving back to the community. We have Kshitiz Students' Welfare Council, Rotract Club of Kshitiz Int'l College, Kshitiz Alumni Relations Gell, KIC Students' Quality Circle, AIESEC etc. for engaging students in social activities.

## COLLEGE PLACEMENT PROGRAMS

KIC offers different job placement opportunities to the students in collaboration with different popular brands and financial institutions.



## Kshitiz Students' Welfare Council (KSWC)



Kshitiz Students' Welfare Council was established in 2015. KSWC works as the bridge for student, teacher and KIC management. KSWC is the great asset of KIC for optimizing our quality and services. KSWC is the canvas for all students where they collaboratively create, share, and demonstrate their knowledge and skill in multi-disciplinary areas of student life. The KSWC consists of 48 members; all Class Representatives (two male and two females from each of the 12 sections) are elected by the students.

## Rotaract Club of Kshitiz International College

Rotaract is a global organization that empowers students and young professionals to create positive change in their local communities and around the world. Rotaract provides unique opportunities that assist its members in becoming the business and professional leaders of tomorrow.

Sponsored by Rotary International, Rotaract Clubs across world are part of a worldwide organization of 210,000 individuals in 10,698 clubs covering 180 countries. Rotaract club of Kshitiz International College is University based and is sponsored by the Rotary Club of Butwal on 9th December 2013. Members engage in a wide range of activities including social, professional and community events.



## Alumni of KIC (Kshitiz Alumni Relations Cell)



Alumni of KIC is an integral part of Kshitiz International College, managed by New Horizon Institute, Butwal-11. This association was formed under the leadership of Mr. Niwas Kunwar Chhetri of batch 2010 with the strong support and guidance of Mr. Sagar Adhikari and Mr. Ram Prasad Belbase of batch 2009 as well as active effort of Mr. Abhishek Gyawali and Mr. Padam Kunwar of batch 2011. This association is keen to bring students who have completed their undergraduate education from KIC under an umbrella for social and professional networking in order to create a mutually beneficial relationship, and also initiating other activities that will contribute to professional development for the members. The key objectives of the association is to support KIC's vision of serving different

BBA and BBA-BI through innovation, change, and global thinking by extending intellectual, moral, and if possible financial support by making use of KICs globally present alumni and facilitate networking, mentorship, internship and professional development opportunities for students.





Inaguration of College Building



Business Plan challenge 2022



Shine Business Presentation Competition Season 1 Winner : Kshiti International College



Mardi Trek by KIC BBA-BI Students



Pokhara University 17th Convocation Ceremony



## STUDENTS' VOICE



After completing my +2 level, I was fully prepared to join KIC as I have heard many good things about it. As I joined BBA program at KIC for my better future it helped me face different problems in my life. I was so inspired by the homely environment and genuine support from the teachers and other staffs which gives me immense pleasure to be a KICian. I achieved a lot here and proud to be a part of KIC family.

**Ram Krishna Acharya, Vice Chancellor Award 2078 (Gold Medalist, PU)**

Selecting KIC has clearly emerged as the most advantageous decision of my academic journey. The distinguished faculty, renowned for their expertise and approachability, have ignited my passion for learning and fostered an environment where questioning and exploration are encouraged. Furthermore, the myriad of extracurricular activities, clubs, and organizations available has allowed me to diversify my skills and broaden my perspectives. As I reflect on my time here, I am astounded by the personal and academic development I have undergone. The decision to enroll in KIC has not only equipped me with a great education but has undoubtedly set me on a path of growth and success that I'm truly excited about.

**Aakriti Aryal, BBA -BI II (Startup Entrepreneur, Tawa House)**



Graduating from KIC in 2015 with a BBA was my stepping stone to entrepreneurship. KIC's education and support were vital in shaping me into a successful entrepreneur. The comprehensive education, industry insights, and dedicated faculty at KIC provided me with the skills and knowledge necessary to excel in the business world. The lessons learned and mentorship received remain my foundation today.

**Padam Jung Kunwar, Alumnus KIC (Entrepreneur, Cooker Coffee)**

As a previous graduate of this esteemed institution, I cannot emphasize enough the transformative impact it had on my life. Through numerous challenging courses, thought-provoking discussions, and hands-on experiences, I not only gained knowledge in my chosen field but also developed critical thinking skills, effective communication abilities, and a strong sense of self-confidence. Beyond the classroom, this institution offered countless opportunities for involvement and leadership. I am filled with a profound sense of gratitude for the education I received at this institution. It equipped me with the skills, knowledge, and confidence to pursue my passion.

**Mr. Bhupati Pandey, Alumnus KIC (Director, SEBON)**



Starting something with challenges builds strength while ending it with a success story inspires perseverance. My 4 years journey of BBA at Kshitiz International College wasn't easy due to government schooling, but with the experienced and inspirational faculty members along with convenient environment made this possible. BBA at KIC played a key role in my overall development. So, I am confident that KIC will be the best choice for new comers who really want to reach the greater heights. I am always grateful to KIC family who plays the vital role to grow academically, personally and professionally.

**Sita Sunam, Alumnus KIC (Business officer, Agricultural Dev. Bank Ltd.)**



## NABIL SCHOOL OF SOCIAL ENTREPRENEURSHIP

LUMBINI PROVINCE PARTNER: KSHITIZ INTERNATIONAL COLLEGE, KALIKANAGAR, BUTWAL

### Introduction

Nabil SSE provides platform for individuals to present their creative ideas and solution through social enterprises, promote and develop social entrepreneurs in all the provinces of Nepal, facilitate access to finance, raise the profile of social entrepreneurs. The program supports learning that builds leadership capacity and those creating change in the society. Nabil SSE has partnered with colleges from each province to offer certificate course in social entrepreneurship. Nabil has been running this program in lumbini province in partnership with Kshitiz International College. It aims to train 700 students per year, 25 per cohort, 28 cohorts per annum across all 7 provinces.



### Course Structure

The Course is structured for 14 days spread over 3 months with three major components :

- Expert & Witness Sessions (8 contact days)
- Worktables/coaching sessions (4 days)
- Visit to social enterprise (2 days)

### Eligibility Criteria

- Age Group : 18 years and above, should be a Nepali Citizen
- Has Identified a social problem and willing to solve it through social entrepreneurship
- Language : Functional knowledge of English and Nepali language
- Attendance : Minimum 90% physical attendance in Partnering colleges



Enrolling in the Nabil School of Social Entrepreneurship (NSSE) was a game-changer. Over three transformative months, I learned to turn my ideas into positive actions for society.

The program's unwavering support and expert guidance fortified my project, fostering growth and refining my vision. Collaborating with like-minded change-makers amplified my impact, while the invaluable lessons learned continue to shape my journey towards creating a meaningful societal change. The experience has truly empowered me with the essential skills and a winning mindset, enabling me to boldly navigate the dynamic and exciting world of entrepreneurship.

**Sadish Gyawali**  
BBA-4th Semester  
(1st Batch, NABIL SSE)



# KIC JOURNAL

The KIC Journal of Management and Economic Review is a research publication of Research Management Cell (RMC) at Kshitiz International College (KIC). In the past four decades, tremendous changes have taken place in the course of doing business. Global competition and global integration of businesses have brought significant challenges for business community of developing nations to achieve sustainable development. In the light of these changing contexts, it is necessary to have academic debates, discussions, and to generate solutions to resolve the emerging management and economic issues and challenges. Therefore, the RMC at KIC has attempted to provide forum for academic discussions through the publication of this Journal along with other research activities.



## KIC FACULTY STRENGTH:

**Department of Finance**  
Surya Rana (Ph.D.)  
Rajendra Lamsal (Ph.D. Scholar)  
Durga Prasad Panta (MBS)  
Yuvraj Neupane (MBS)  
Niwas Kunwar Chhetri (MBA)  
Rajendra Thapa (M. Phil.)

**Department of English**  
Prof. Jib Lal Sapkota (Ph.D.)  
Arun Kumar Kshetree (Ph.D.)  
Tara Nath Bhattarai (Ph.D.)  
Prakash K.C. (M.A.)  
Yub Raj Panthi (M.Ed.)

**Department of Marketing**  
Netra Bashyal (Ph.D. Scholar)  
Bharat Bhusal (Ph.D. Scholar)  
Lal Bd. Pun (M.Phil.)  
Shambhu Pandey (MBA)

**Department of Economics**  
Indra Bhusal (Ph.D. Scholar)  
Pramshu Nepal (Ph.D.)  
Bikash Bhatt Chhetri (M.A.Eco.)  
Pitamber Sapkota (M.A.Eco.)

**Department of Accountancy**  
Tanka Bahadur Raut (MBS)  
Himal KC (MBS)

**Department of IT and General Management**  
Tuk Raj Gurung (MBS)  
Ramesh Pd. Ghimire (MBS)  
Durga Adhikari (MBS)  
Namrata Bhandari (MBA)  
Subash Nepal (MBS)  
Alina Shakya (MBA)

**Department of Mathematics & Statistics**  
Gopal Pd. Acharya (M.Sc./M.Phil.)  
Ram Hari Chapagain (M.A.)  
Arjun Prasad Pokhrel (M.Sc.Stat)  
Madhu Sudan Bhusal (M.Sc.Stat)  
Dhruba Aryal (MSc.)

**Department of Social Science**  
Niraj Lacoul (M.A.)  
Kabita K.C. (M. Phil. Scholar)

**Department of Banking & Insurance**  
Yashodhan Pandey (M.Com./C.A.)  
Sandeep Bhattarai (MBA)

**KIC Research Management Cell**  
Surya Rana (Ph.D.)  
Arun Kumar Kshetree (Ph.D.)  
Rajendra Lamsal (Ph.D. Scholar)  
Bharat Bhusal (Ph.D. Scholar)  
Akriti Aryal



# ACHIEVEMENTS OF KIC



**Ramkrishna Acharya**  
Vice Chancellor Award 2078  
(Gold Medalist, Pokhara University)



**Shristee Kc**  
Top 4th Rank 2078  
(Pokhara University)



**Binita Khatri**  
Top 8th Rank 2073  
(Pokhara University)



**Mamata Gaire**  
Top 8th Rank 2078  
(Pokhara University)

## POKHARA UNIVERSITY DEAN LIST



Sagar Adhikari



Bhupati Pandey



Ashim Sharma



Supriya Chaudhary



Alisha Shakya



Jharana Bhandari



Niwas Kunwar



Samjhana Dahal



Abishek Gyawali



Rasmita Gubhaju



Kalpana Bhandari



Sushila Thapa



Anjali Panthi



Divya Khatri



Geeta Neupane



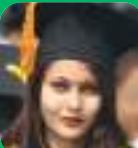
Anjana Lamsal



Sandhya Pantha



Anju Bhattarai



Surakshya Gautam



Srijana Aryal



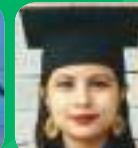
Akshay Shrestha



Sarita Chhetri



Bristhi Koirala



Melina Acharya



Santosh Malla



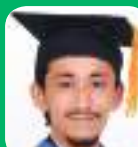
Binod Bhandari



Jawed Pathan



Anjali Ghimire



Bibek Shrestha



Manisha Khanal



Ganesh Bhusal



Sagar Bhandari



Bijay Thapa



Pooja Gyawali



Geeta Kandel



Chandrika Gautam



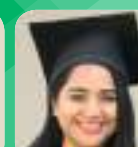
Narayan Wosti



Prashanta Pun



Chinta Bahadur Rana



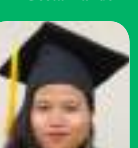
Asmita Lalkarna



Anju Bhandari



Akriti Bajracharya



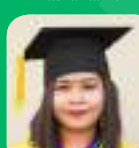
Bishnu Chaudhary



Ratna Paudel



Kriti Bhattarai



Nisha Hamal



Mahendra Prasad Pantha



Muna Singjali



Muskan Gupta



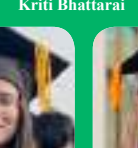
Promise Rai Bantawa



Saloni Gupta



Shalini Chhetri



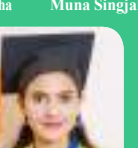
Sharmila Thapa



Simran Dhakal



Preeti Gautam



Preeti Gautam